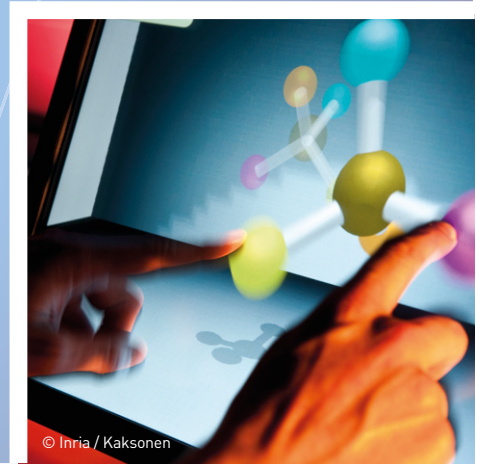




Inria is a French public research institute dedicated to digital science placed under the supervision of the French ministries of research and industry. Its goal is to produce excellent research in the information technology and mathematics fields of digital science, and to guarantee the impact of its research by transferring knowledge and technologies to the industrial sector.

Inria supports the competitiveness and growth of innovative companies.



© Inria / Kaksonen

## Innovate with digital science research

### Target markets

- Information technology: microelectronics, networks and telecommunications, multimedia, information systems and enterprise software, CAD, etc.
- Healthcare technologies
- Aerospace
- Automotive industry and transportation
- Energy and sustainable cities
- Defence
- Finance
- Robotics
- Luxury and cosmetics

- ➔ Optimization, machine learning and statistical methods.
- ➔ Optimization and control of dynamic systems.

### Algorithms, programming, software and architecture

- ➔ Proofs and verification.
- ➔ Security and confidentiality.
- ➔ Algorithms, computer algebra and cryptology.
- ➔ Embedded and real-time systems.
- ➔ Architecture, languages and compilation.

### Networks, systems and services, distributed computing

- ➔ Networks and telecommunications.
- ➔ Distributed systems and middleware.
- ➔ Distributed and high-performance computing.

- ➔ Distributed programming and software engineering.

### Perception, cognition and interaction

- ➔ Vision, perception and multimedia interpretation.
- ➔ Interaction and visualization.
- ➔ Data and knowledge representation and processing.
- ➔ Robotics and smart environments.
- ➔ Languages, speech and audio.

### Digital health, biology and earth

- ➔ Earth, environmental and energy sciences.
- ➔ Modelling and control for life sciences.
- ➔ Computational biology.
- ➔ Digital neuroscience and medicine.

### Areas of research

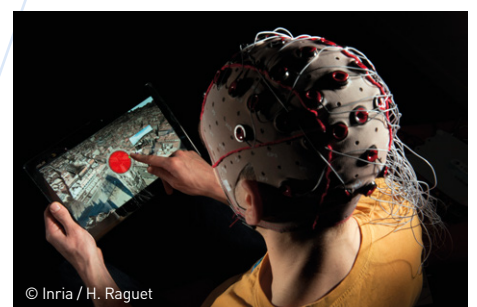
A unique model where research is organised by project-team, each with a lead scientist and a dual mission of research and transfer. These teams explore all software based aspects of computational sciences:

### Applied mathematics, computation and simulation

- ➔ Numerical schemes and simulations.
- ➔ Stochastic approaches.



© Inria / Kaksonen



© Inria / H. Raguet



## Services provided

➔ The Inria Carnot Institute has more than 50 transfer professionals dedicated to industrial partnerships and serving companies:

- in daily contact with research teams;
- located in 8 research centres in Lille, Grenoble, Nancy, Saclay, Paris, Rennes, Bordeaux and Sophia Antipolis;
- active in the local business ecosystems;
- coordinated by the Deputy CEO for Transfer and Industrial Partnerships.

➔ An offer tailored to the needs of companies and partners:

- contractual and collaborative research;
- technology transfer and maturation;
- framework agreements for long term collaborations.

➔ Special effort to reach out to SMEs to support them in their innovation projects:

- Inria Innovation Labs (joint laboratories with SMEs).

## The Inria Carnot Institute also offers:

➔ Inria's experience when it comes to starting innovative companies:

- In 2014, Inria celebrated 30 years of supporting startup creation. Through a proactive policy that focuses on creating economic value, Inria has helped found more than 120 companies out of Inria teams.

➔ Facilitation initiatives:

- Inria Industry meetings, thematic events held several times a year in Paris and in other French cities to promote the results of public research.

➔ An international presence:

- CIRIC, a transfer and innovation oriented centre of excellence in Chile.
- Inria@SiliconValley, in the United States, in partnership with the University of California, Berkeley and Stanford University and the Joint High-Performance Computing Laboratory in Urbana-Champaign.
- LIAMA, a presence in China since 1997.

Research staff  
(full-time equivalent): 1 608  
including PhD students: 460

Partnership incomes  
with industry: 26 M€

Global budget: 165 M€

## CONTACT

**Stéphane DALMAS**  
Executive Director  
+33 (0)4 92 38 78 18  
ici@inria.fr



Institut Carnot Inria,  
Domaine de Voluceau  
Rocquencourt  
BP 105  
78153 Le Chesnay  
France